

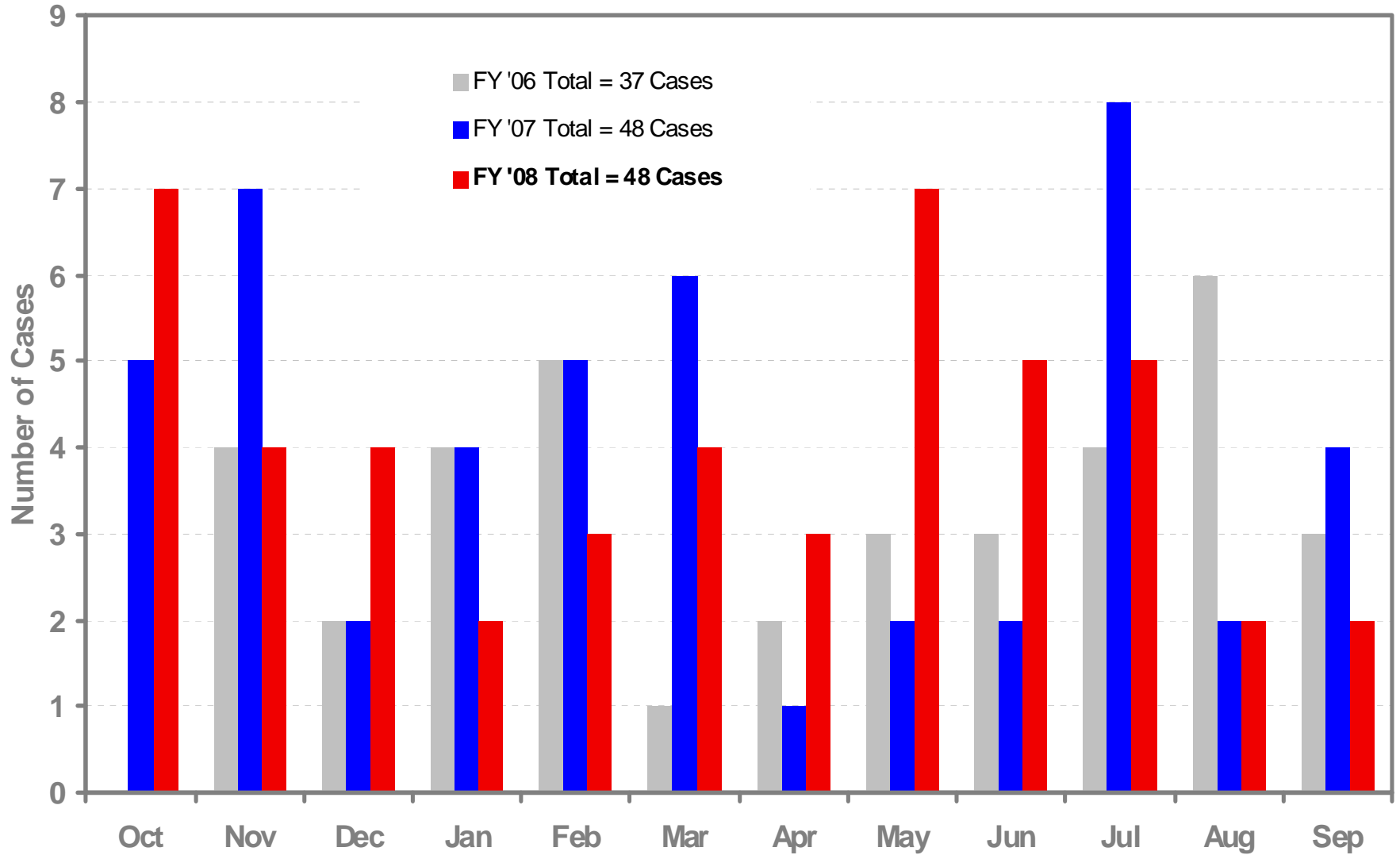
Berkeley Lab Accident Statistics Through September 30, 2008

These slides are updated on a monthly basis, as soon as data are reasonably final for the preceding month. Hours worked are estimated monthly and updated with final and actual values quarterly.

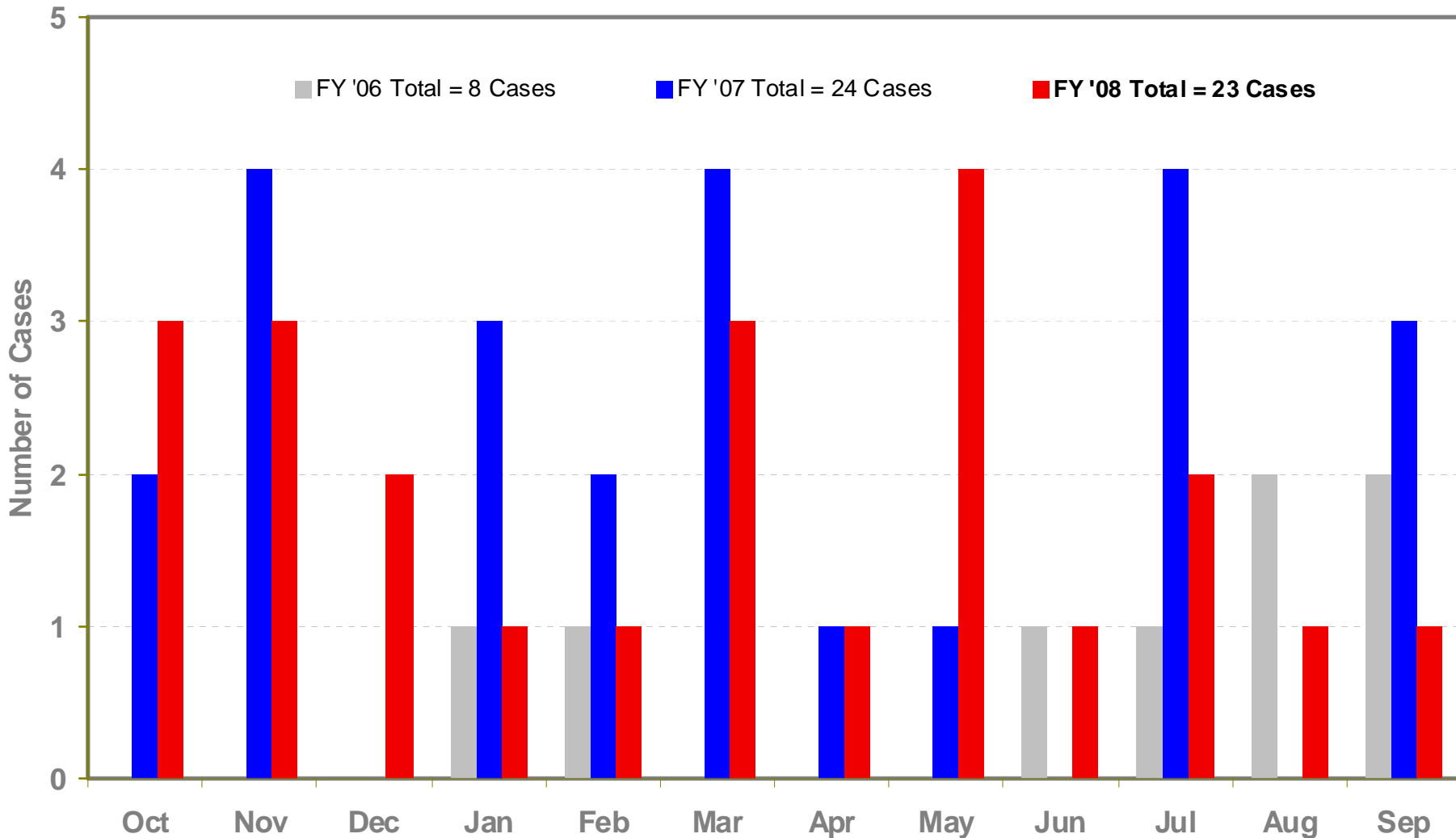
While every effort is made to present accurate and final data, data may change in subsequent months, as additional information becomes available and as later developments change the recordability of some cases.

Refer questions about these charts to rwwfisher@lbl.gov

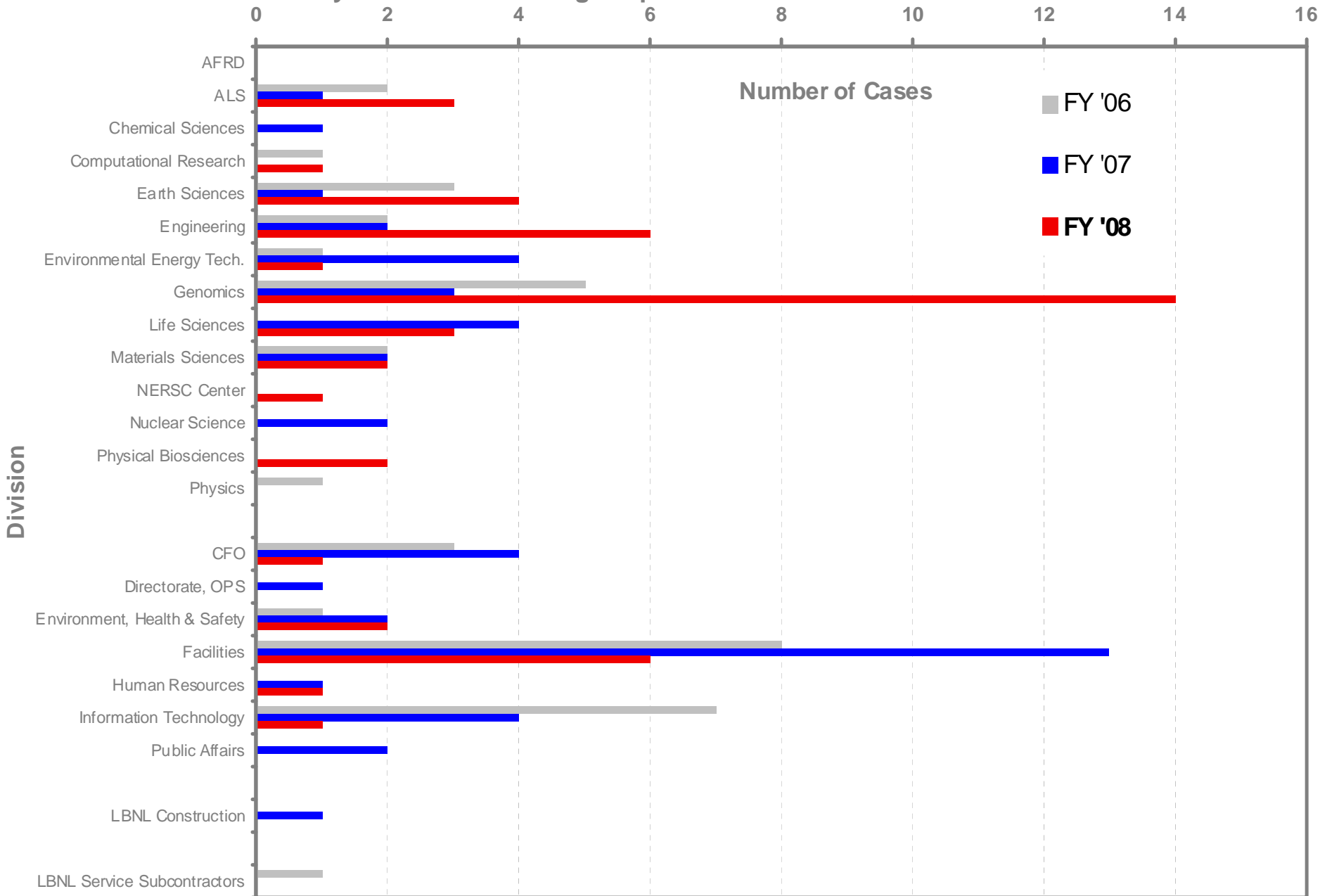
LBLN Recordable Cases FY06 through September 30 FY08



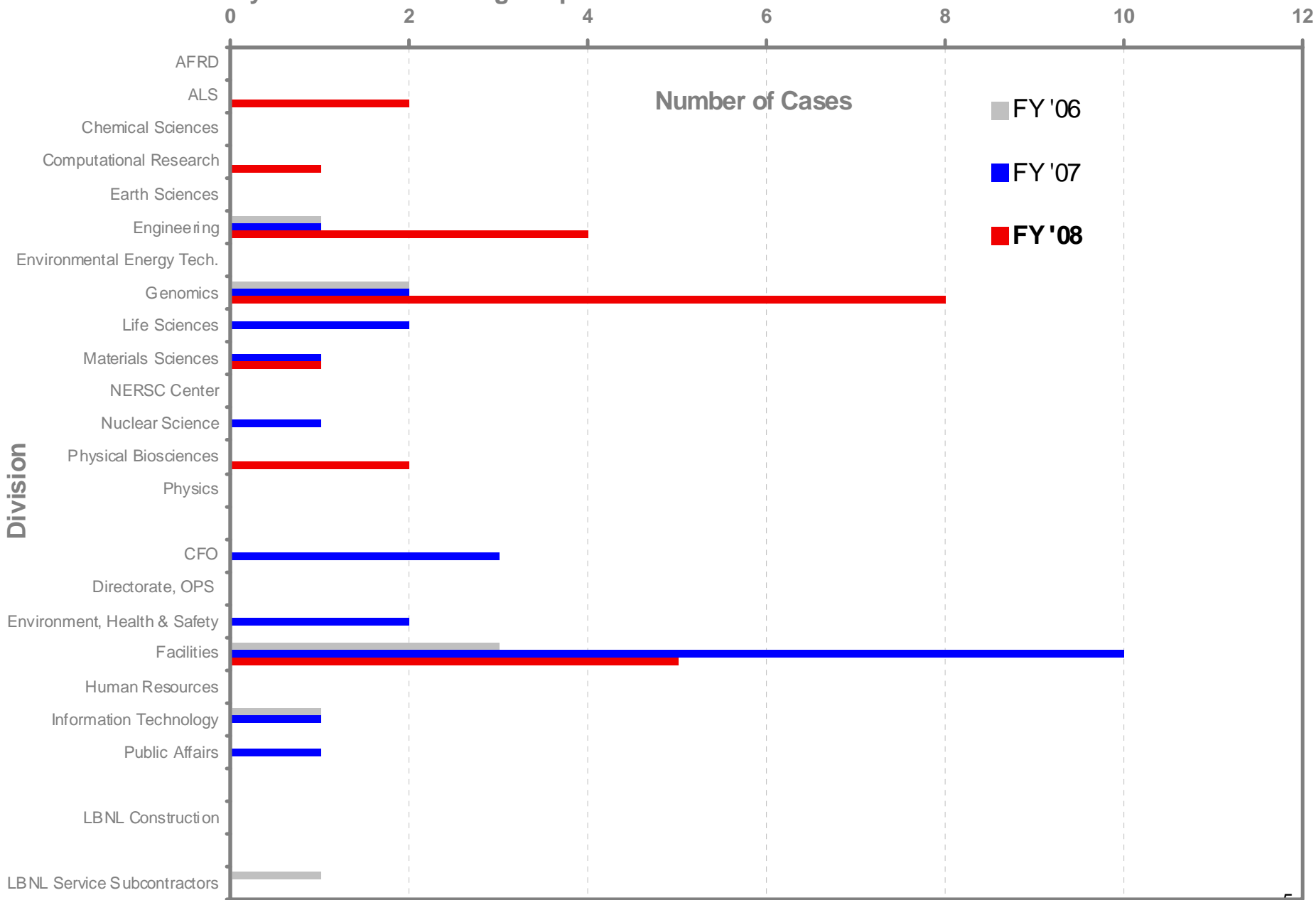
LBL DART Cases FY06 through September 30 FY08



LBLN Recordable Cases by Division FY06 through September 30 FY08



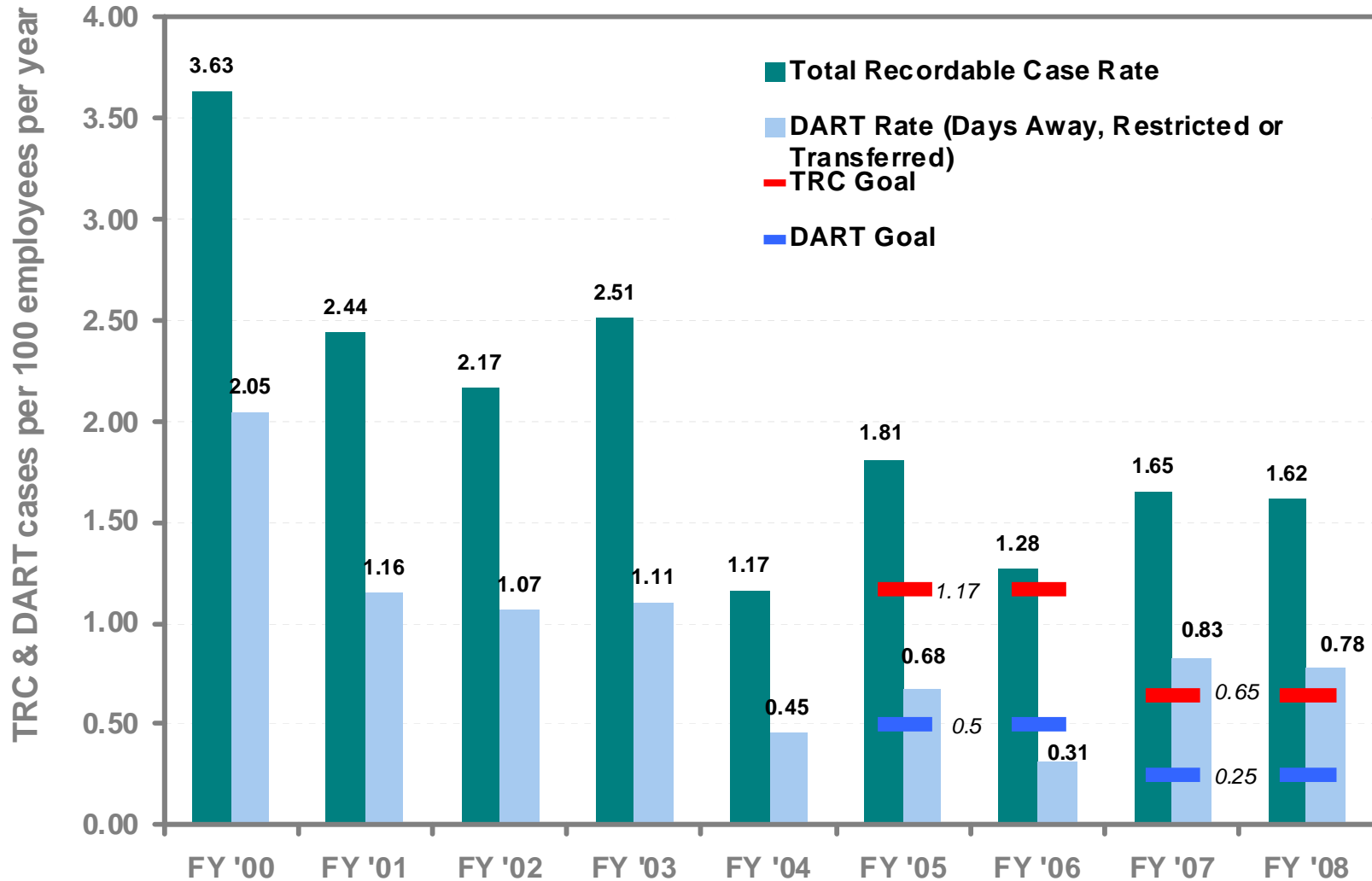
LBLN DART Cases by Division FY06 through September 30 FY08



Berkeley Lab Site-Wide TRC & DART Rates

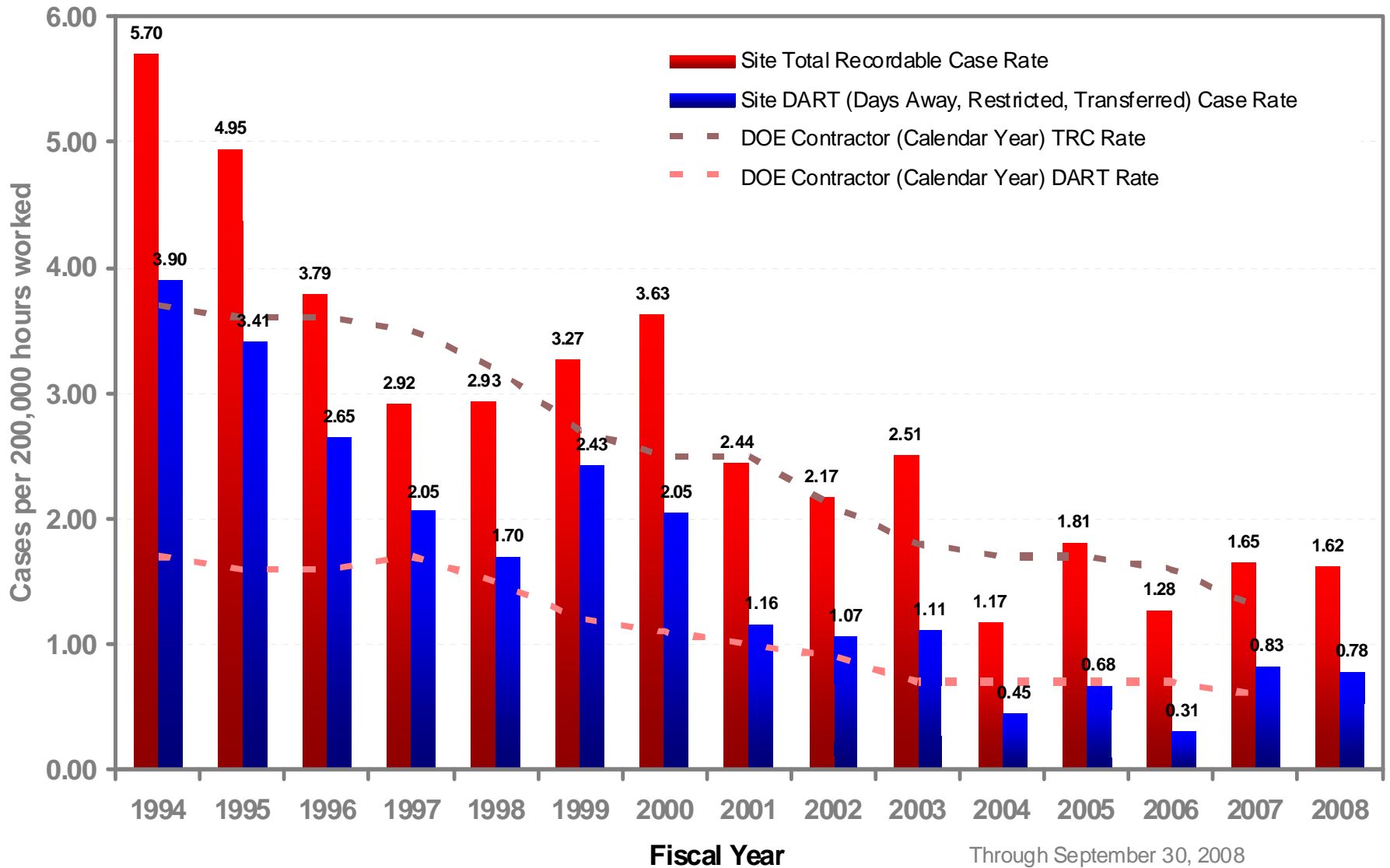
(Includes all Construction and Service Contractors)

Through September 30, 2008



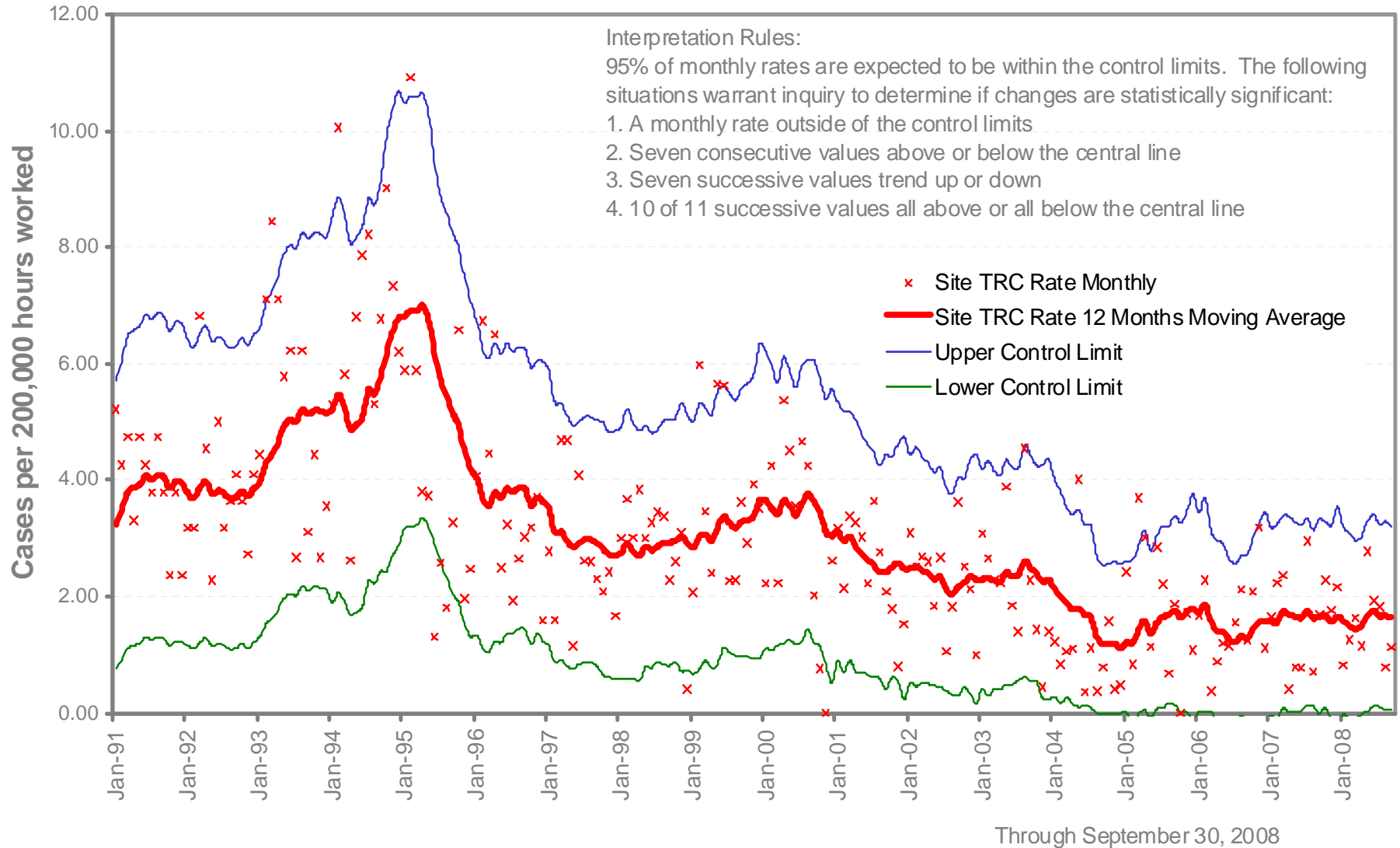
LBNL vs DOE Contractor Rates

Berkeley Lab Site Accident Rates



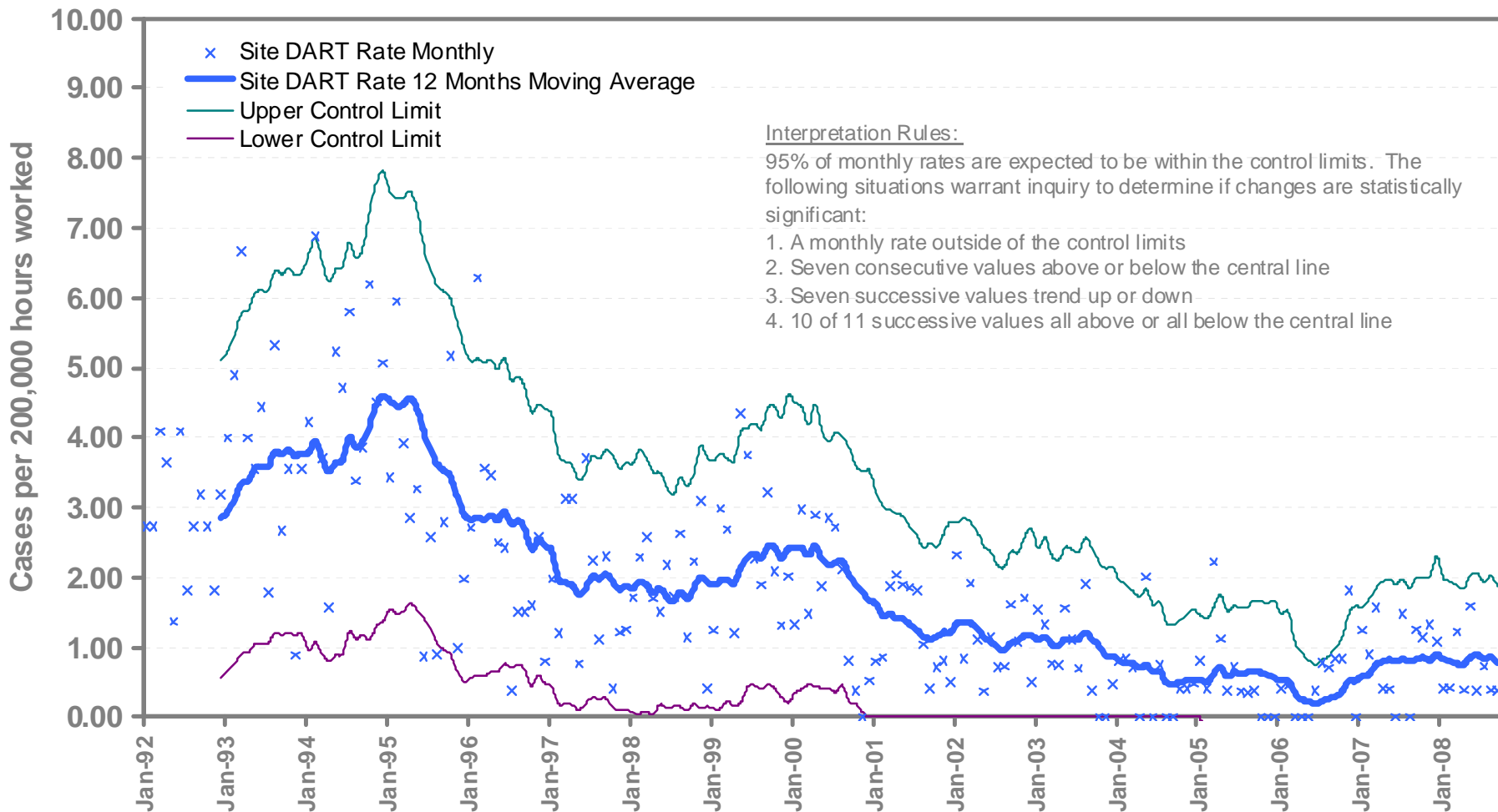
Long Term Injury Rates - TRC

Berkeley Lab Total Recordable Case Rates With Control Limits At 95% Confidence Level



Long Term Injury Rates - DART

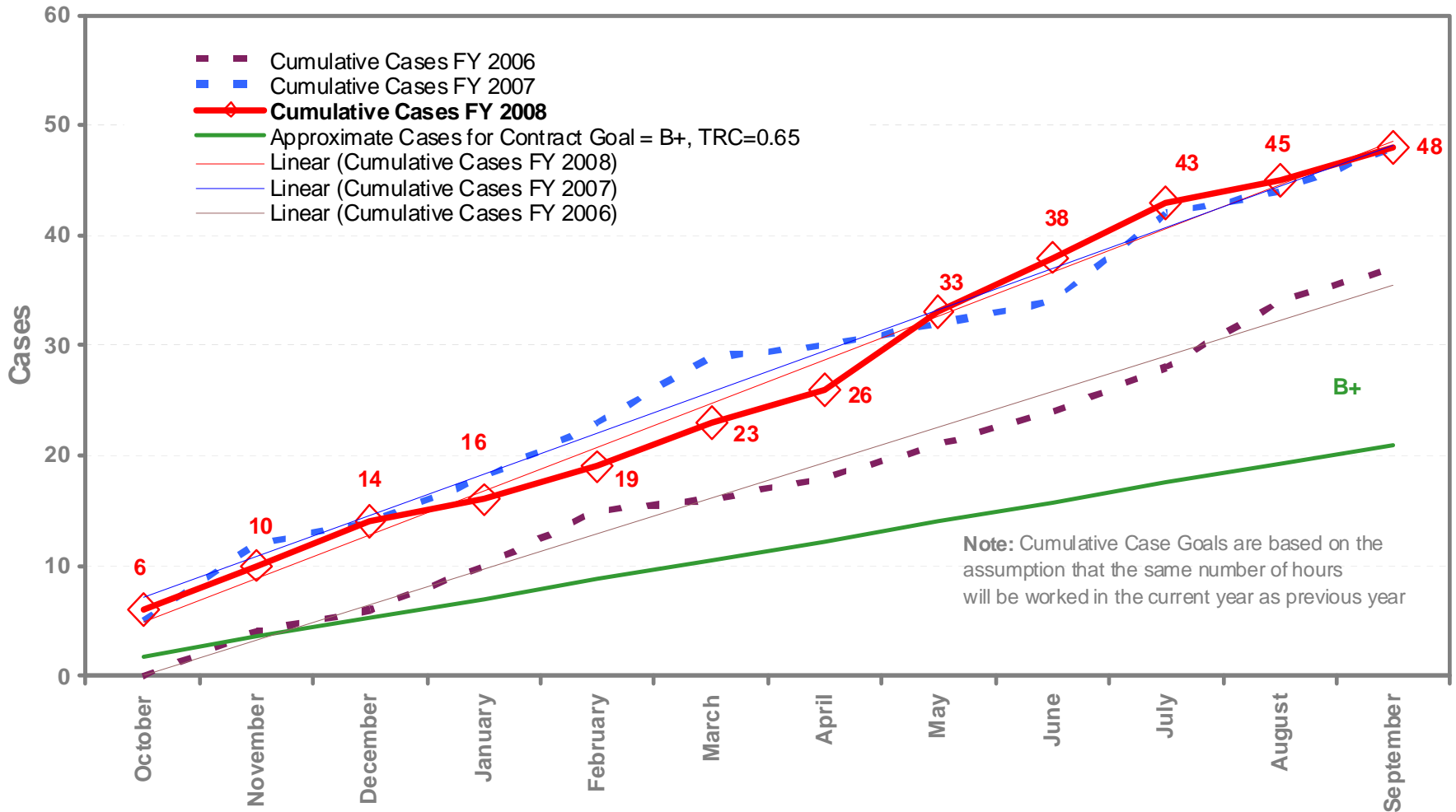
Berkeley Lab DART Rates With Control Limits At 95% Confidence Level
(Cases with Days Away, Restricted or Transferred)



Through September 30, 2008

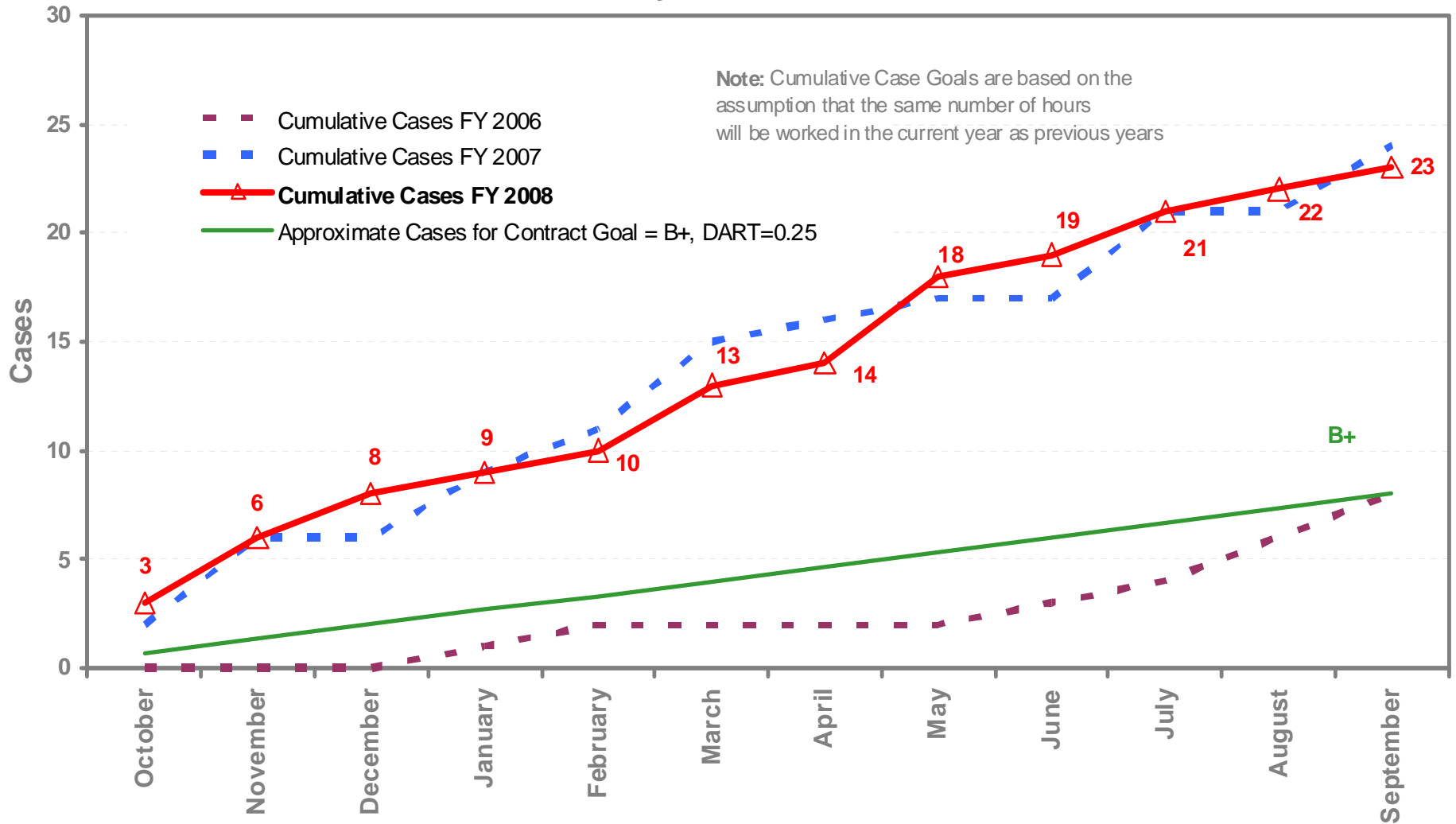
Performance vs Contract Goals - TRC

Berkeley Lab and Contractors
 Cumulative Total Recordable Cases
 By Fiscal Year

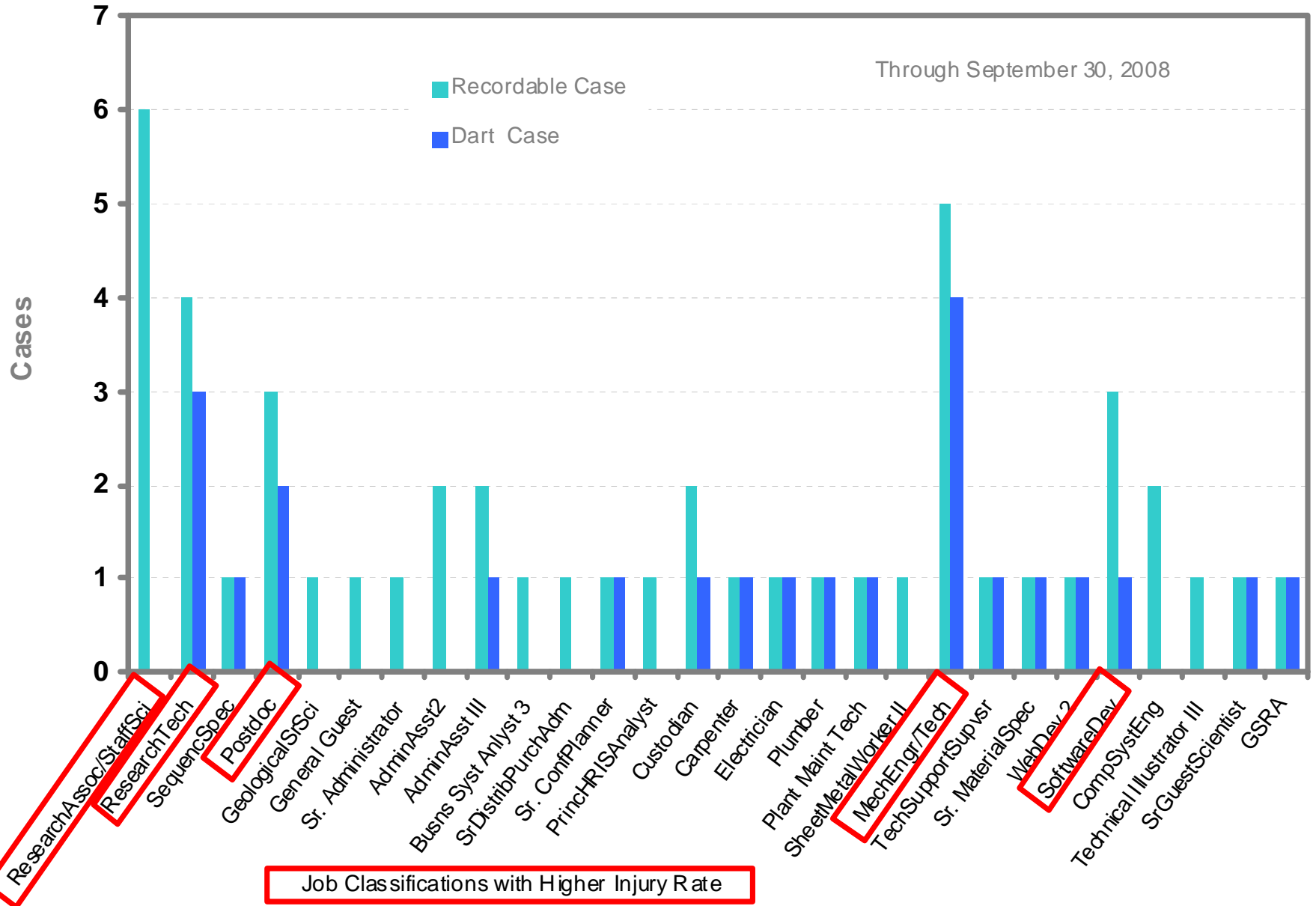


Performance vs Contract Goals - DART

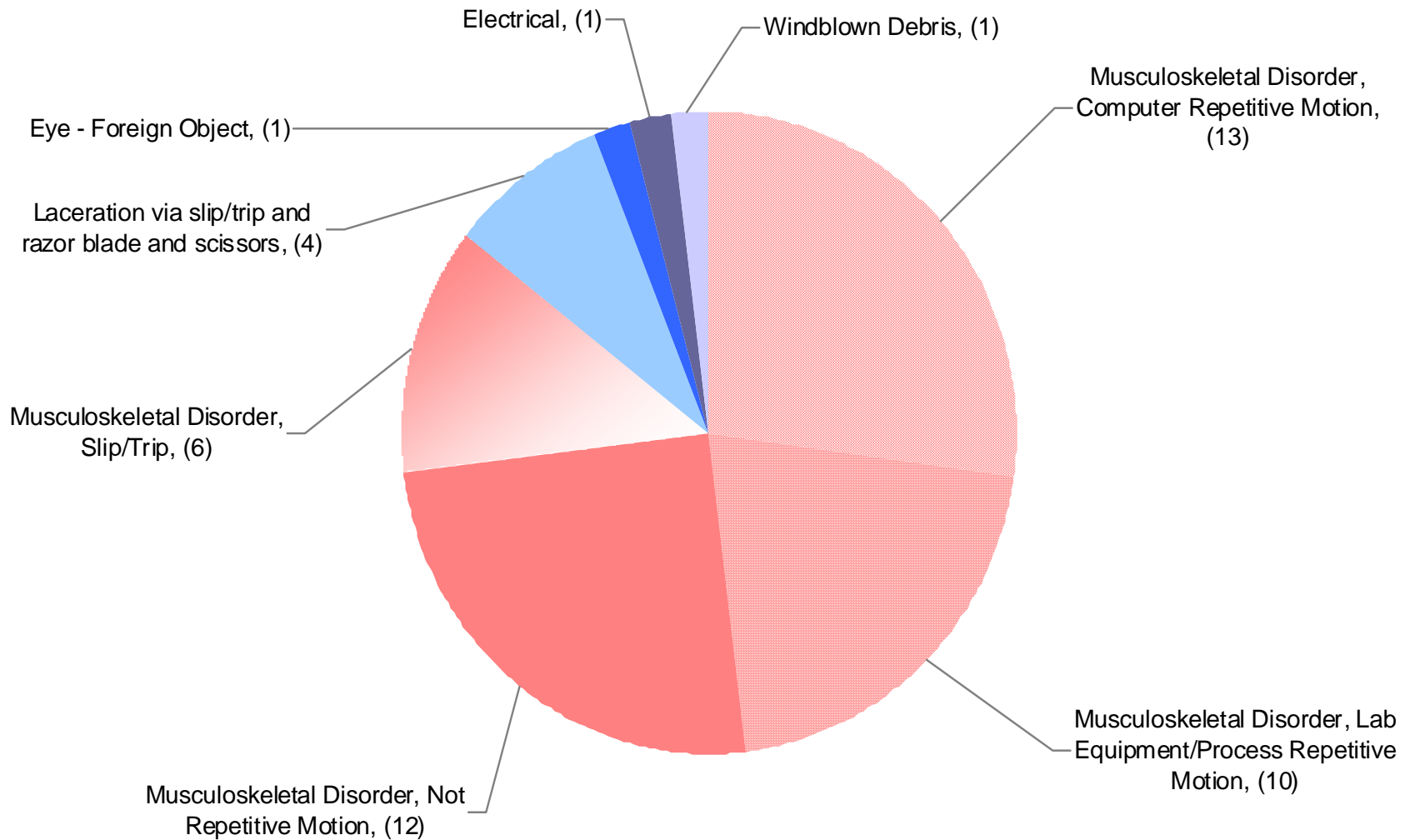
Berkeley Lab and Contractors
 Cumulative DART (Days Away, Restricted, Transferred) Cases
 By Fiscal Year



Recordable and DART Cases by Job Classification

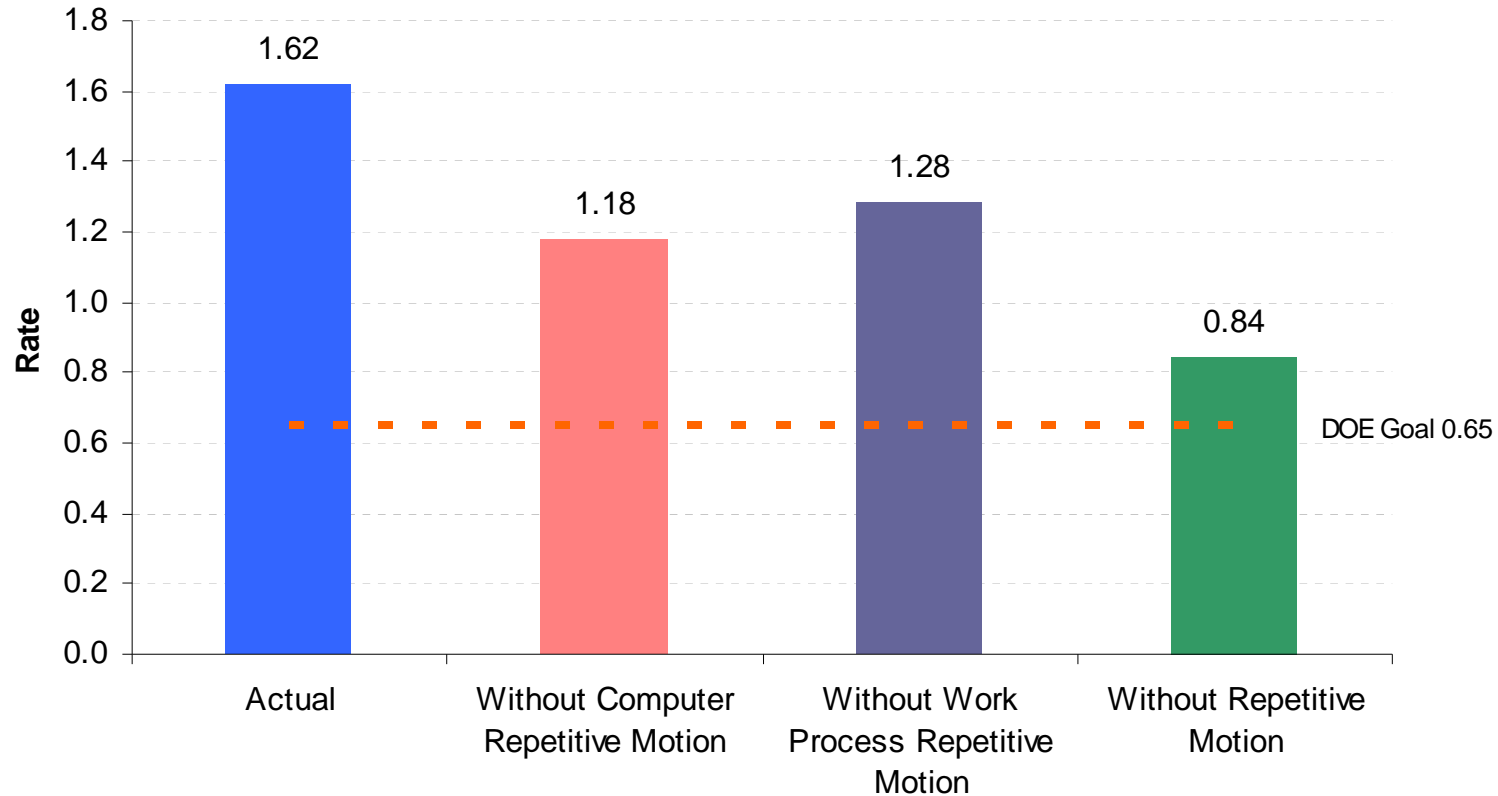


Injury Categories and Causes FY08 through September 30, 2008



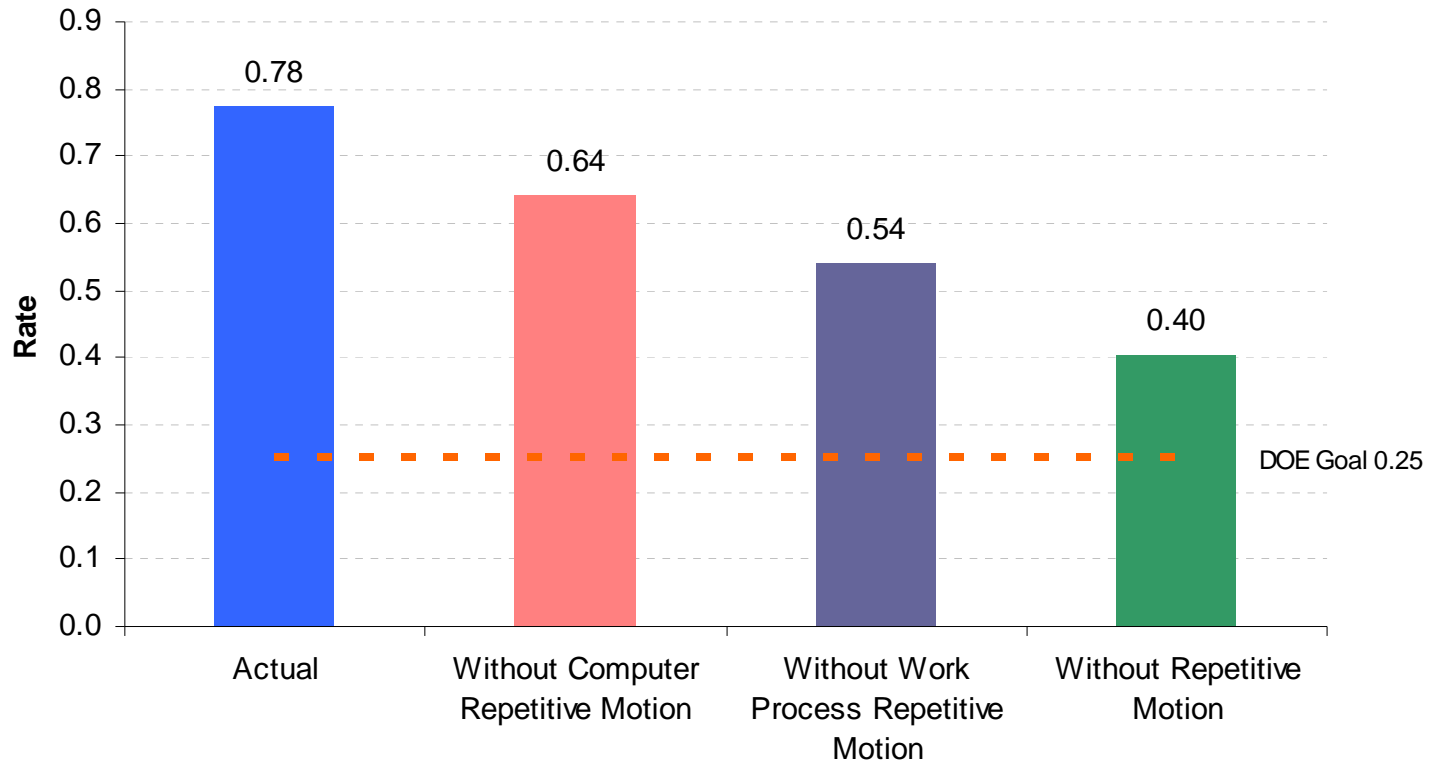
LBNL TRC Rate Ergonomic Contribution FY08

LBNL FY08 TRC Rate With and Without Repetitive Motion Injuries

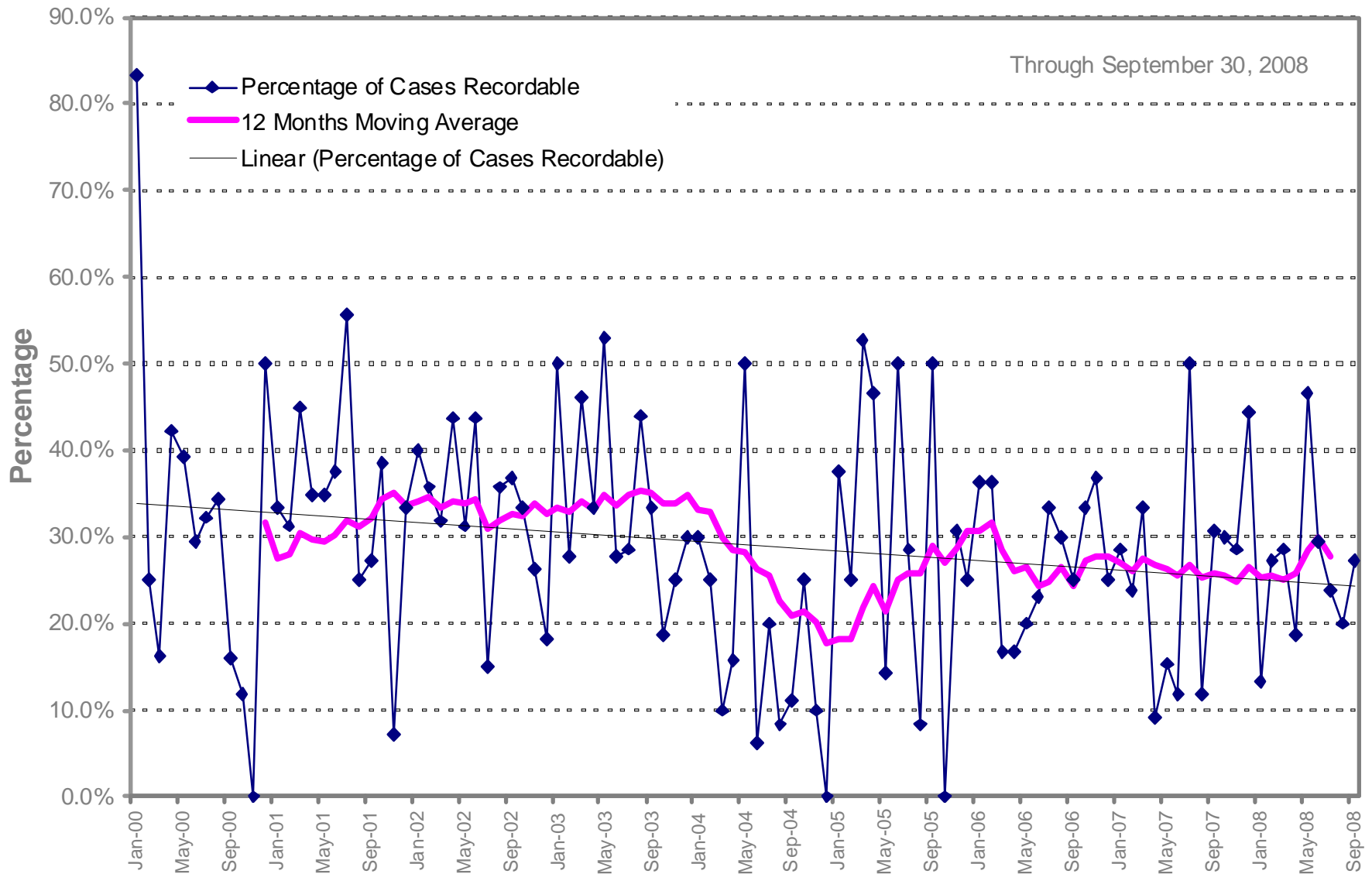


LBNL DART Rate Ergonomic Contribution FY08

LBNL FY08 DART Rate With and Without Repetitive Motion Injuries

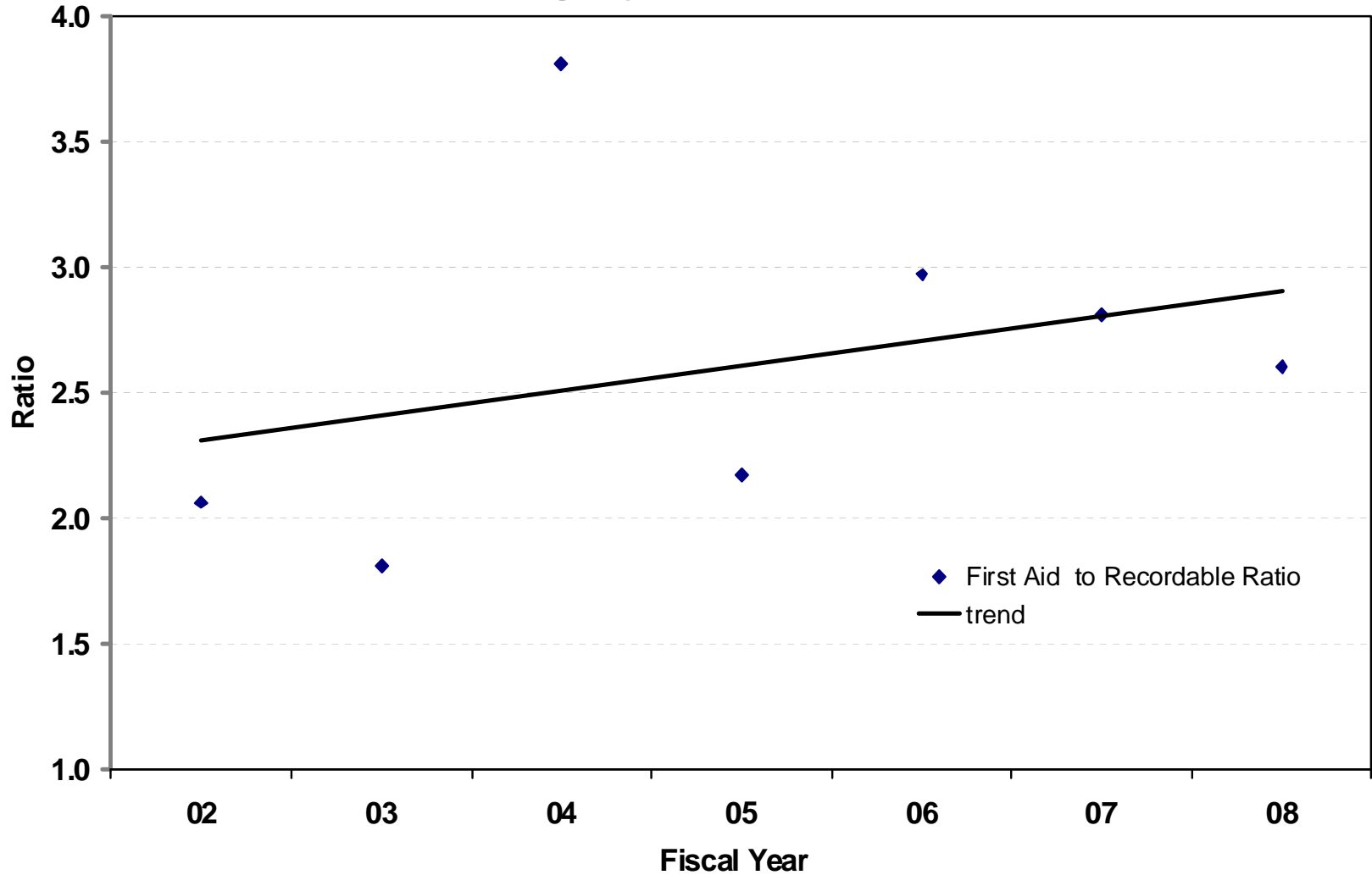


Percentage of All Injuries Reported That Are Recordable Monthly, 12 Month Moving Average, Trend since 1/1/2000

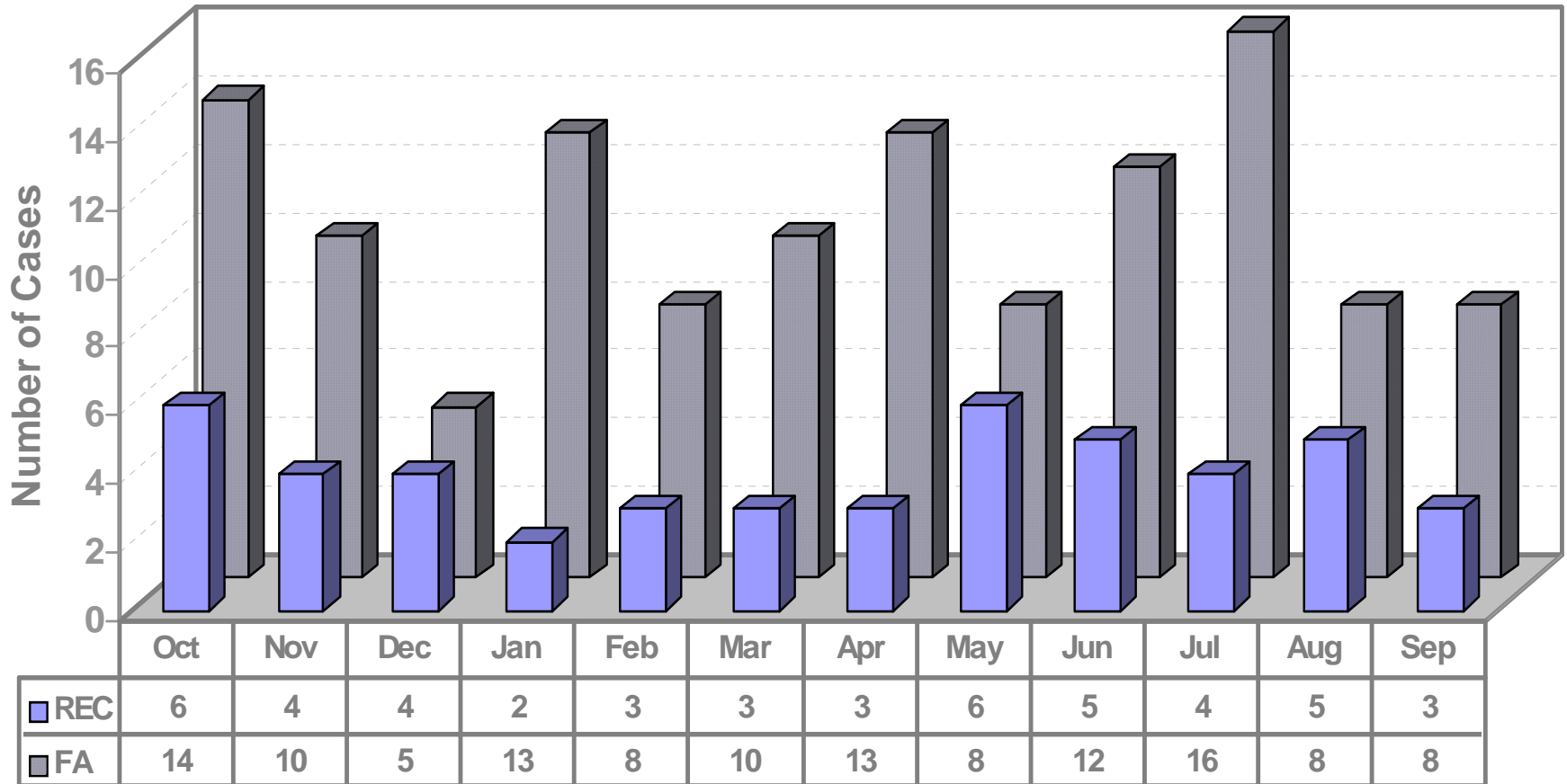


First Aid to Recordable Case Ratio

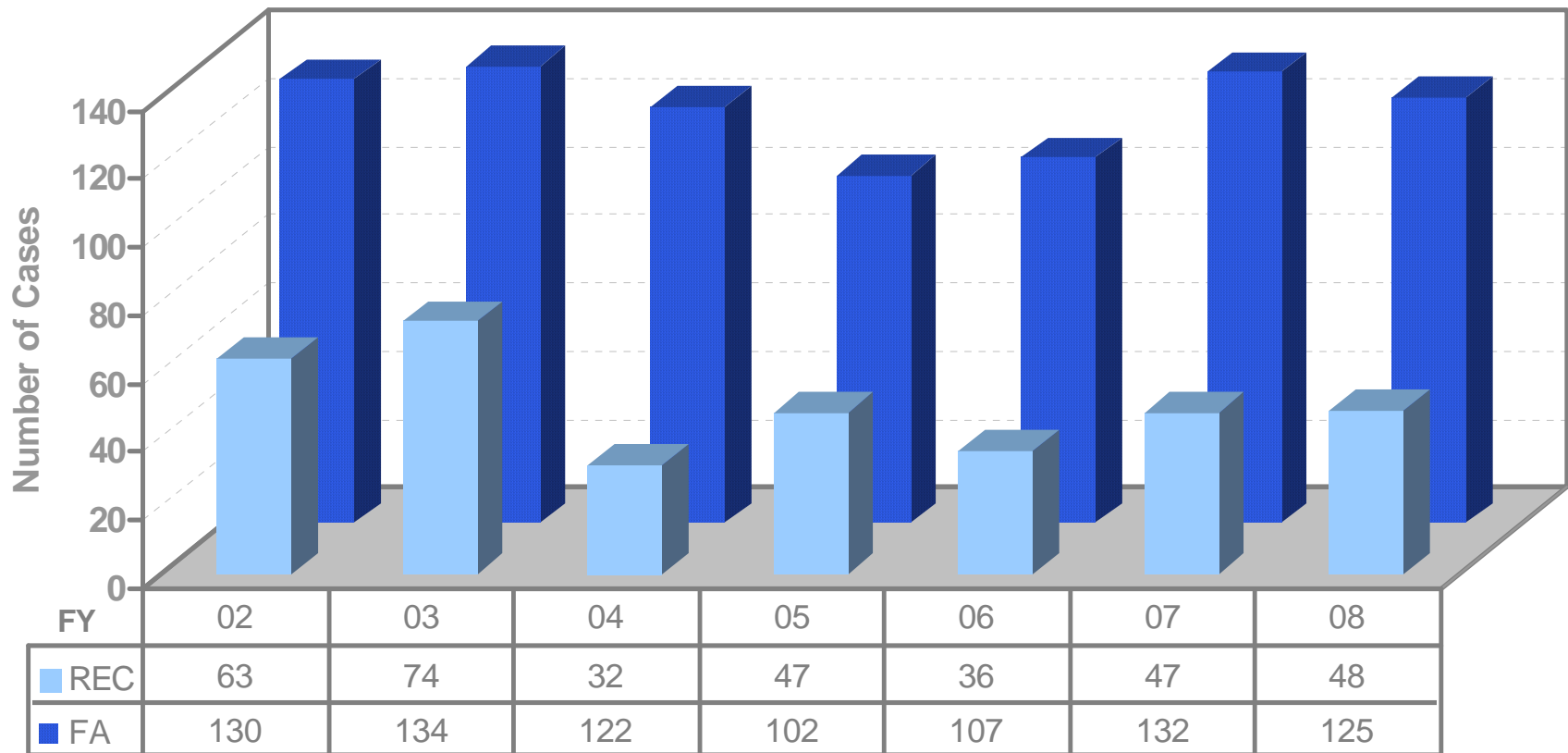
through September 30, 2008



FY08 First Aid to Recordable Comparison through September 30, 2008



FY02 to FY08 First Aid to Recordable Comparison through September 30, 2008



LBNL Total Recordable Cases October 1, 2007 - September 30, 2008

	Oct-07	Nov-07	Dec-07	Jan-08	Feb-08	Mar-08	Apr-08	May-08	Jun-08	Jul-08	Aug-08	Sep-08	Contract Goal TRC = 0.65	Total YTD
LBNL Research														
Computing Sciences	0	1	0	0	0	0	0	0	1	0	0	0	1	2
Computational Research	0	1	0	0	0	0	0	0	0	0	0	0		1
NERSC Center	0	0	0	0	0	0	0	0	1	0	0	0		1
General Sciences	0	1	1	0	1	0	0	1	1	1	0	0	3	6
AFRD	0	0	0	0	0	0	0	0	0	0	0	0		0
Engineering	0	1	1	0	1	0	0	1	1	1	0	0		6
Nuclear Science	0	0	0	0	0	0	0	0	0	0	0	0		0
Physics	0	0	0	0	0	0	0	0	0	0	0	0		0
Life & Environmental Sciences	5	2	1	1	1	3	1	2	2	3	0	0	4	21
Earth Sciences	0	0	0	0	0	1	0	1	1	1	0	0		4
Genomics	5	2	1	0	1	2	1	1	0	1	0	0		14
Life Sciences	0	0	0	1	0	0	0	0	1	1	0	0		3
Physical Sciences	1	0	0	1	1	0	0	4	0	1	0	0	5	8
ALS	0	0	0	1	1	0	0	0	0	1	0	0		3
Chemical Sciences	0	0	0	0	0	0	0	0	0	0	0	0		0
Environmental Energy Tech.	1	0	0	0	0	0	0	0	0	0	0	0		1
Materials Sciences	0	0	0	0	0	0	0	2	0	0	0	0		2
Physical Biosciences	0	0	0	0	0	0	0	2	0	0	0	0		2
LBNL Research Sub-Total	6	4	2	2	3	3	1	7	4	5	0	0	13	37
LBNL Support														
Environment, Health & Safety	0	0	1	0	0	0	0	0	0	0	0	1		2
Facilities	0	0	1	0	0	1	1	0	0	0	2	1		6
Human Resources	1	0	0	0	0	0	0	0	0	0	0	0		1
Information Technology	0	0	0	0	0	0	1	0	0	0	0	0		1
Public Affairs	0	0	0	0	0	0	0	0	0	0	0	0		0
CFO	0	0	0	0	0	0	0	0	1	0	0	0		1
Directorate	0	0	0	0	0	0	0	0	0	0	0	0		0
LBNL Support Sub-Total	1	0	2	0	0	1	2	0	1	0	2	2	4	11
LBNL Total	7	4	4	2	3	4	3	7	5	5	2	2	17	48
LBNL Construction	0	0	0	0	0	0	0	0	0	0	0	0	0	0
LBNL Service Subcontractors	0	0	0	0	0	0	0	0	0	0	0	0	1	0
Site Grand Total	7	4	4	2	3	4	3	7	5	5	2	2	18	48
<i>Prior Year (FY07) Site Grand Total</i>	5	7	2	4	5	6	1	2	2	8	2	4		48
<i>Prior Year (FY06) Site Grand Total</i>	0	3	2	4	4	1	2	2	3	4	6	2		33
Color Gradation Key:	0	1	2	3	4	5	6	7	8+					

Data as of 9/30/08

Notes: Projections assume that hours worked will remain constant

LBNL DART (Days Away, Restricted, Transferred) Cases October 1, 2007 - September 30, 2008

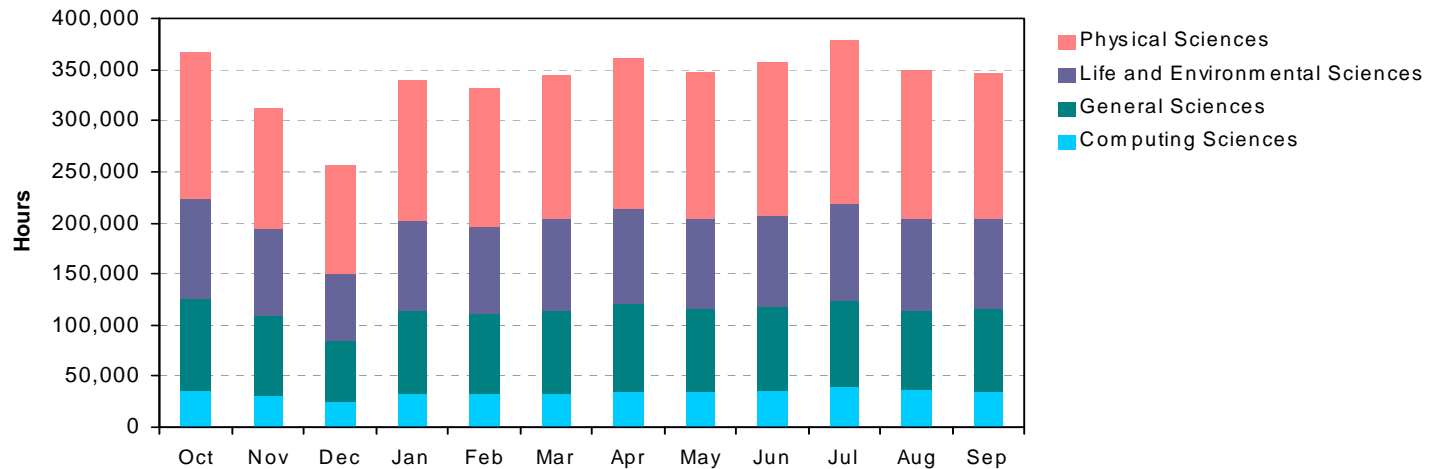
	Oct-07	Nov-07	Dec-07	Jan-08	Feb-08	Mar-08	Apr-08	May-08	Jun-08	Jul-08	Aug-08	Sep-08	Contract Goal DART = 0.25	Total YTD
LBNL Research														
Computing Sciences	0	1	0	0	0	0	0	0	0	0	0	0	0	1
Computational Research	0	1	0	0	0	0	0	0	0	0	0	0		1
NERSC Center	0	0	0	0	0	0	0	0	0	0	0	0		0
General Sciences	0	1	0	0	1	0	0	1	1	0	0	0	1	4
AFRD	0	0	0	0	0	0	0	0	0	0	0	0		0
Engineering	0	1	0	0	1	0	0	1	1	0	0	0		4
Nuclear Science	0	0	0	0	0	0	0	0	0	0	0	0		0
Physics	0	0	0	0	0	0	0	0	0	0	0	0		0
Life & Environmental Sciences	3	1	1	0	0	2	0	0	0	1	0	0	2	8
Earth Sciences	0	0	0	0	0	0	0	0	0	0	0	0		0
Genomics	3	1	1	0	0	2	0	0	0	1	0	0		8
Life Sciences	0	0	0	0	0	0	0	0	0	0	0	0		0
Physical Sciences	0	0	0	1	0	0	0	3	0	1	0	0	2	5
ALS	0	0	0	1	0	0	0	0	0	1	0	0		2
Chemical Sciences	0	0	0	0	0	0	0	0	0	0	0	0		0
Environmental Energy Tech.	0	0	0	0	0	0	0	0	0	0	0	0		0
Materials Sciences	0	0	0	0	0	0	0	1	0	0	0	0		1
Physical Biosciences	0	0	0	0	0	0	0	2	0	0	0	0		2
LBNL Research Sub-Total	3	3	1	1	1	2	0	4	1	2	0	0	5	18
LBNL Support														
Environment, Health & Safety	0	0	0	0	0	0	0	0	0	0	0	0		0
Facilities	0	0	1	0	0	1	1	0	0	0	1	1		5
Human Resources	0	0	0	0	0	0	0	0	0	0	0	0		0
Information Technology	0	0	0	0	0	0	0	0	0	0	0	0		0
Public Affairs	0	0	0	0	0	0	0	0	0	0	0	0		0
CFO	0	0	0	0	0	0	0	0	0	0	0	0		0
Directorate	0	0	0	0	0	0	0	0	0	0	0	0		0
LBNL Support Sub-Total	0	0	1	0	0	1	1	0	0	0	1	1	2	5
LBNL Total	3	3	2	1	1	3	1	4	1	2	1	1	7	23
LBNL Construction	0	0	0	0	0	0	0	0	0	0	0	0	0	0
LBNL Service Subcontractors	0	0	0	0	0	0	0	0	0	0	0	0	0	0
Site Grand Total	3	3	2	1	1	3	1	4	1	2	1	1	7	23
<i>Prior Year (FY07) Site Grand Total</i>	2	4	0	3	2	4	1	1	0	4	0	3		24
<i>Prior Year (FY06) Site Grand Total</i>	0	0	0	1	1	0	0	0	1	1	2	2		8
Color Gradation Key:	0	1	2	3	4	5	6	7	8+					

Data as of 9/30/08

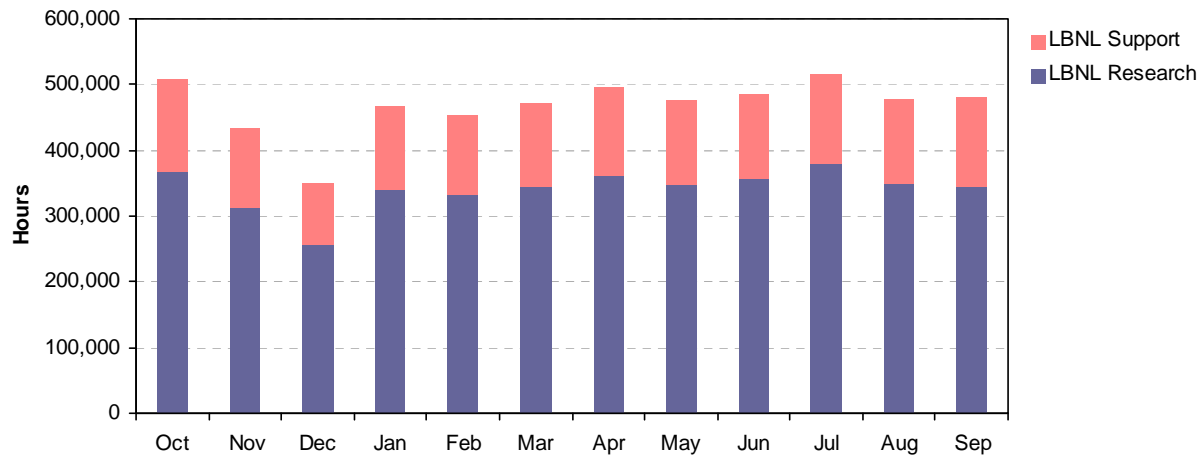
Notes: Projections assume that hours worked will remain constant

LBNL Research and Support Hours FY08

LBNL Research Hours FY08

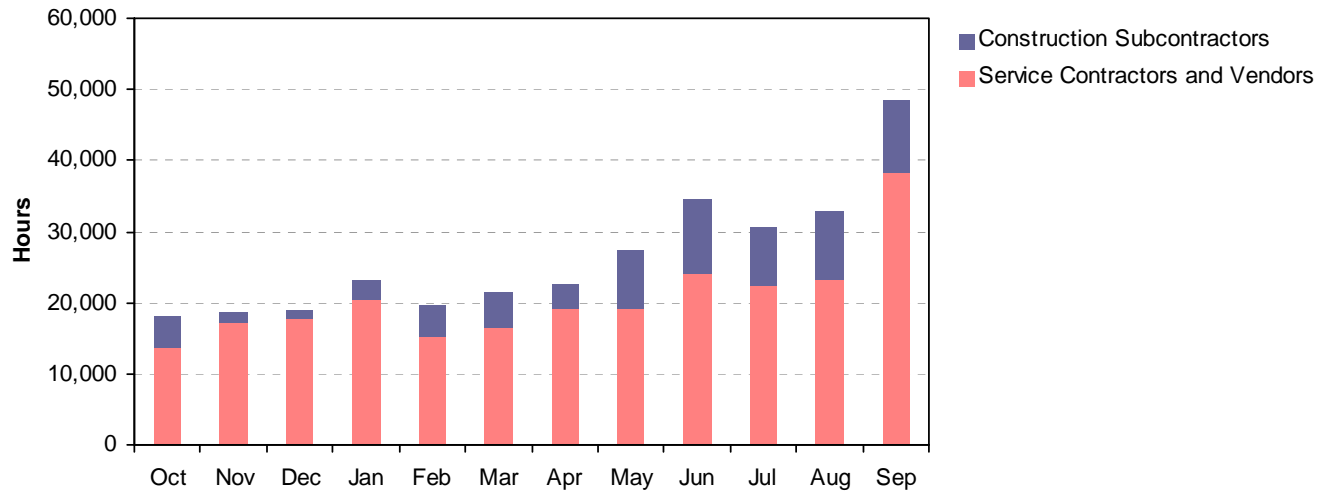


LBNL Support and Research Hours FY08



Non - LBNL and LBNL Hours FY08

LBNL Construction, Service Contractors and Vendors Hours FY08



LBNL Sitewide Hours FY08

